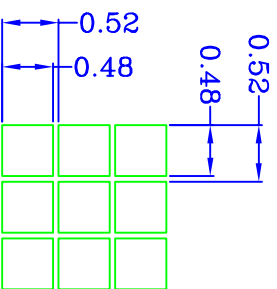
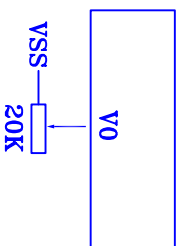



1	K	Backlight (-)
2	A	Backlight (+) +5.0V
3	VSS	Power ground
4	VDD	Power supply (+5.0V)
5	/CS	Chip select
6	RS(CS)	Register select (Parallel mode); Chip select (Serial mode)
7	R/W(SID)	H: Read; L: Write (Parallel mode); Serial data input (Serial mode)
8	E(SCLK)	Enable signal (Parallel mode); Serial clock (Serial mode)
9	DB0	DATA BUS 0 (Not used in serial mode)
10	DB1	DATA BUS 1 (Not used in serial mode)
11	DB2	DATA BUS 2 (Not used in serial mode)
12	DB3	DATA BUS 3 (Not used in serial mode)
13	DB4	DATA BUS 4 (Not used in serial mode)
14	DB5	DATA BUS 5 (Not used in serial mode)
15	DB6	DATA BUS 6 (Not used in serial mode)
16	DB7	DATA BUS 7 (Not used in serial mode)
17	PSB	H: Parallel mode; L: Serial mode
18	/RES	Reset signal
19	V0	Contrast adjust
20	NC	

- NOTES:
1. DISPLAY TYPE: STN,YELLOW-GREEN
  2. POLARIZER TYPE: TRANSPARENT, POSITIVE
  3. VIEW DIRECTION: 6:00
  4. OPERATING TEMPERATURE: -30°C~+80°C
  5. STORAGE TEMPERATURE: -35°C~+85°C
  6. VDD: +5.0V
  7. DRIVE METHOD: 1/64DUTY, 1/9BIAS
  8. CONTROLLER: RA8816N
  9. BACKLIGHT TYPE: YELLOW-GREEN
  10. BACKLIGHT SUPPLY VOLTAGE: +5.0V
  11. 所有的I/O口必须3.3V.



		<b>WAYING (HONGKONG) SHARES LIMITED</b>	
DESIGN:		MODEL NUMBER:	
CHECK:		WYM12864K43	VERSION: A
APPROVE:			SHEET: 1 OF 1
Unspecified tolerances are ±0.3			DATE: 2015-11-28